

# Custom4U App for Unique Liners

## Step-by-step guide

Welcome to the modern, practical and reliable scanning process with the Custom4U App from Ottobock! All you need is an iPad with a Structure Sensor scanner attachment. Just ask your sales rep where to get your personal equipment – they can provide you with the necessary information. Ready to start?



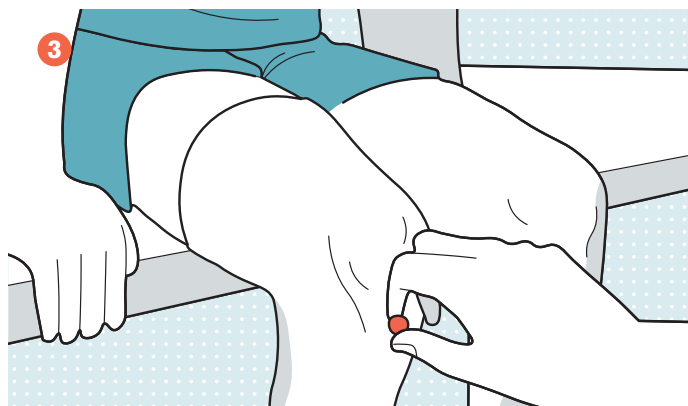
Custom4U Scanning App for iPad iOS



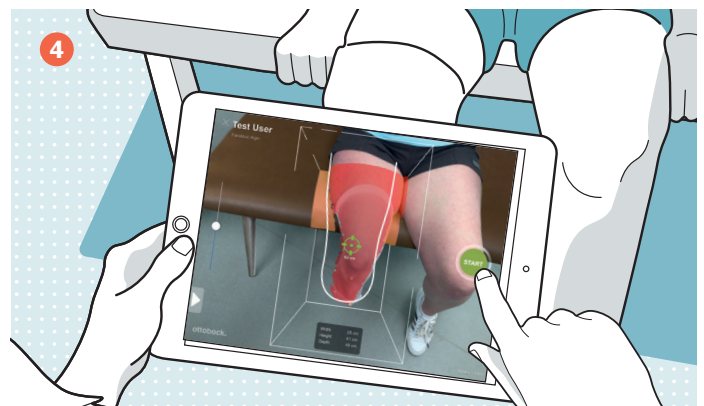
- First of all, please make sure that your iPad and Structure Sensor are fully charged
- Open the app, input your practitioner and patient information, choose the affected limb and press START



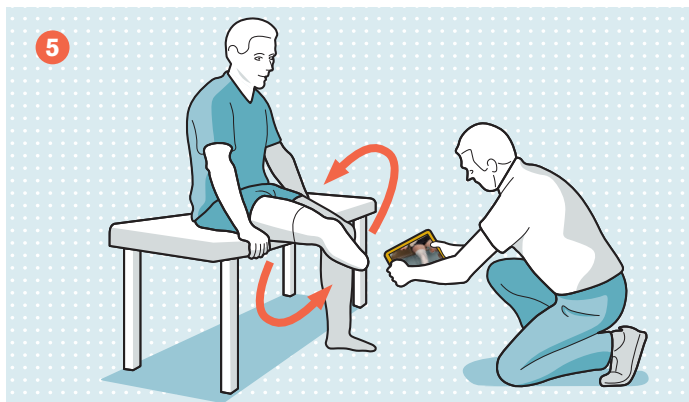
- Take your time and carefully read the instructions, then press OK
- Please note: Limbs >4" length → scan in <math><10^\circ</math> flexion and at least 9" above MPT  
Limbs <4" length → scan in  $20^\circ$  flexion



- If necessary, use a thin textile sock
- Clearly mark the MPT level with a 5 mm foam piece that protrudes from the limb
- Also mark further problem areas



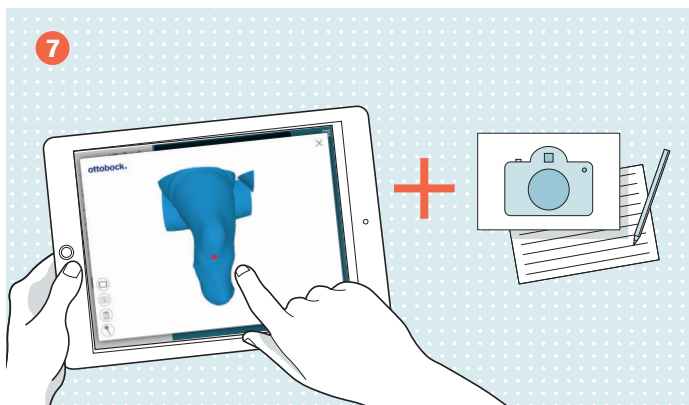
- The green cross indicates the right distance (~2 feet)
- Make sure the limb is entirely within the cube (if necessary, change the cube size)
- START the scanning process



- Take a 360° shot of the limb to capture the entire surface
- The feedback symbol indicates if the distance is correct
- Scanned areas will be shaded in white



- Complete the scan and make sure no areas are left out
- As soon as the scan shows no gaps, please press DONE



- Check your scan and RESET if necessary
- Add photos, notes and other relevant information for the liner production



- Choose a product: Skeo Unique or Uneo Unique
- Fill in the order form
- As soon as you are done, click on the envelope and press SEND to complete the ordering process

## Please note:

- In case of limbs with very severe invagination and scarring, please send a plaster cast
- Scan indoors or away from direct sunlight